



Construction and the Built Environment – Unit 2

2.3 Drawing plans

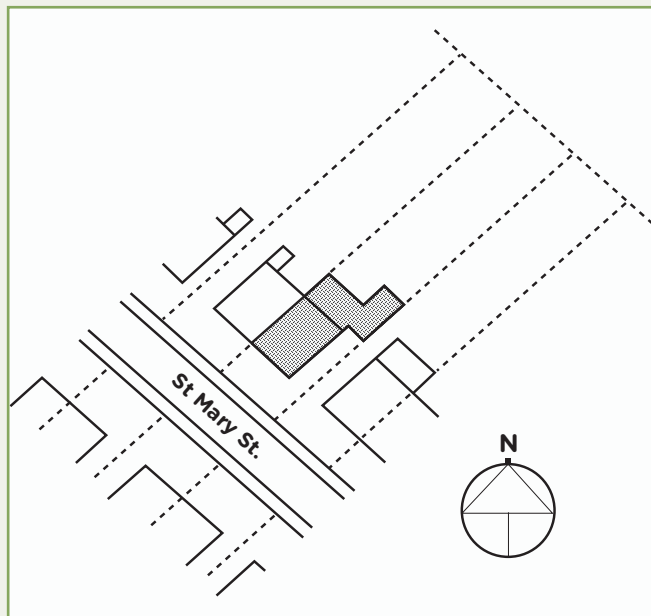
Several different types of plans are produced as part of the construction design process. These plans are vital for outlining the vision of the designer or architect in detail to everyone involved in the project. These could include clients, developers, structural engineers, surveyors and members of the public.

Plans are also a vital means of communicating project details when seeking planning permission.

BLOCK PLANS

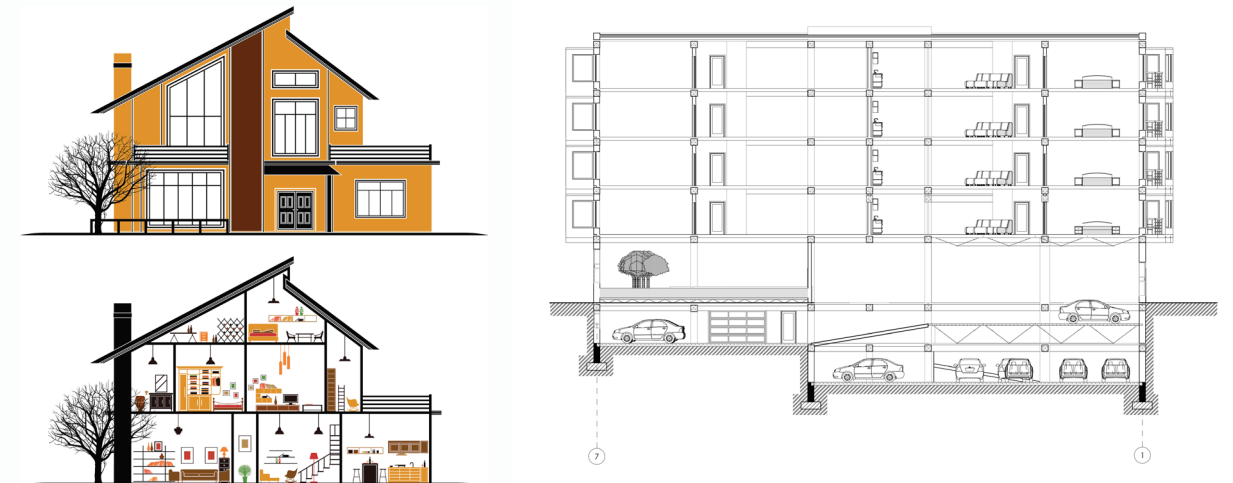
A **block plan** shows the location of the proposed development in relation to the site boundaries and other existing buildings on the site.

It should be drawn to a suitable scale, such as 1:200 or 1:500.



CROSS-SECTIONS

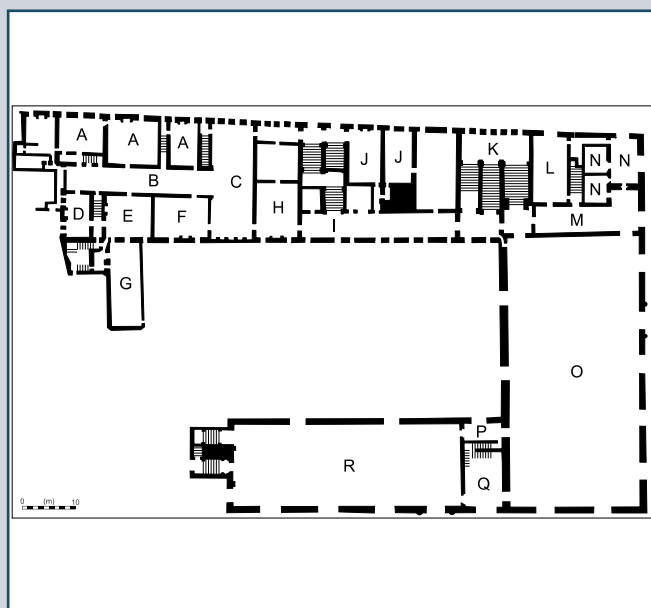
A **cross-section**, also simply called a section, represents a vertical plane cut through a building or structure, in the same way that a floor plan is a horizontal section viewed from above.



FLOOR PLANS

A **floor plan** (or plan view) is a scaled drawing showing a view from above that illustrates the relationship between rooms, spaces and other physical features. Dimensions can be drawn between the walls to specify room sizes and wall lengths.

Floor plans are drawn to scale, such as 1:100.



SCALE DRAWINGS

Scale drawings are used to show objects that are not convenient to draw at their actual size. Objects are reduced in size so that they can fit on a sheet of paper or a computer screen.

For example, when using a scale of 1:5, the first number refers to the size of the drawing and the second number refers to the relative size of the actual object being drawn – meaning the actual object is five times bigger than the drawing. Conversely, on a scale of 5:1, the object is five times smaller than the drawing.

A range of scales, recognised by British Standard 1192, are used depending on the type and nature of the drawing, including:

- 1:1, 1:5 and 1:10 for construction details
- 1:100 for floor plans
- 1:200 or 1:500 for block plans
- 1:50, 1:100 and 1:200 for layout and site plans
- 1:1250 for location plans.