

Dissection of mammalian kidney

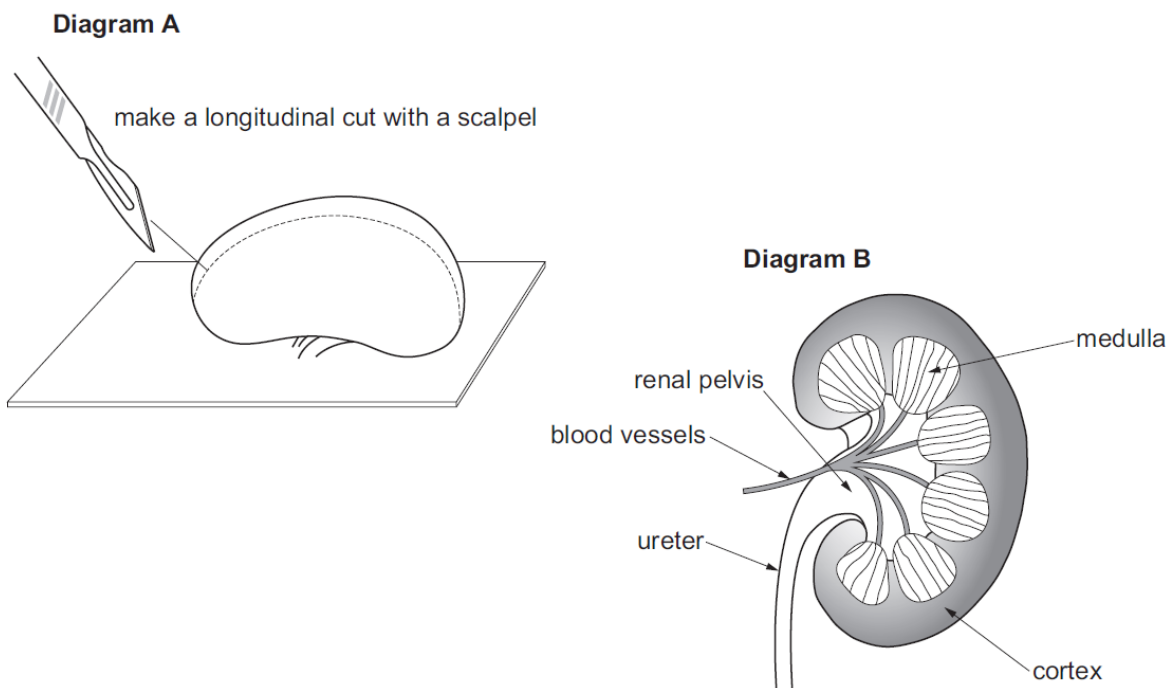
Introduction

The kidney is a vital component of the urinary system and is responsible for filtering the blood and the production of urine. In this practical you will examine the external structure and internal structure of the kidney following dissection.

Apparatus

kidney
scalpel
newspaper and dissection board
disposable gloves and goggles

Diagram of Apparatus



Method

1. Place dissection board on top of the newspaper and place the kidney on top of it.
2. **BEFORE YOU DISSECT:**
 - a. Examine the outside of the kidney. The ureter, renal artery and renal vein all enter the kidney in the same area. It may be possible to observe these structures.
 - b. Draw a diagram of the kidney.
3. Slice longitudinally through the kidney as shown in the diagram.
4. Arrange the kidney with the cut surface facing upwards.
5. Locate the cortex, which is the outer dark red / brown layer; the medulla, which is the lighter striped layer just below the cortex and the pelvis, which is the central white mass that branches out into the medulla.
6. Draw a diagram of the kidney after dissection and label the following layers: cortex, medulla and pelvis.