



Interactive Human Eye

for students and teachers

www.visiondirect.co.uk/the-human-eye

Vision Direct has created an interactive human eye tool that shows you how the eye works and how we see. It's part of our commitment to helping people gain a better understanding of eye health and the importance of maintaining healthy vision.

How does the interactive human eye tool work?

The interactive human eye tool is very easy to use. Simply tap on the arrows to follow the journey and see how light enters the eye before being translated into an image. You can click or tap on different parts of the eye to see what they are called. Find information about how these parts work, provided by our head optician.

Extra resources for teachers

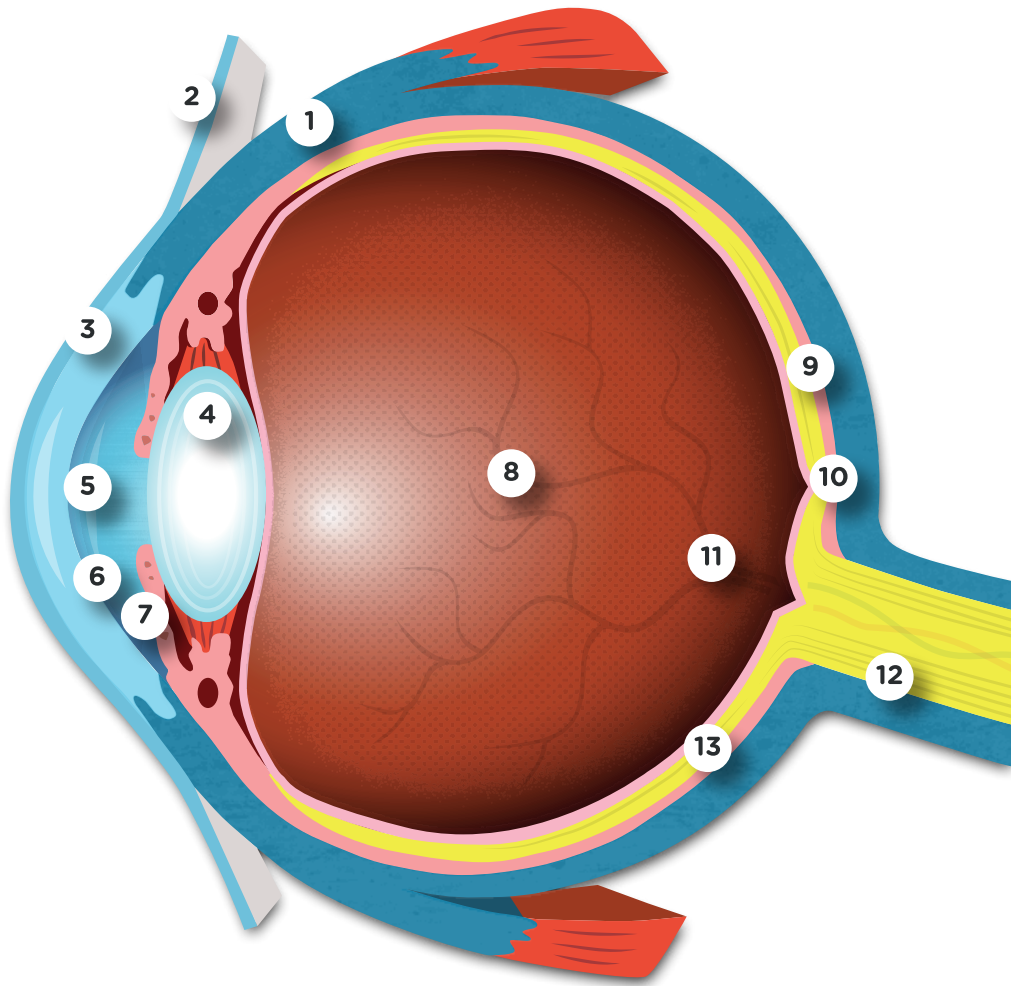
In addition to the interactive eye tool available at www.visiondirect.co.uk/the-human-eye, we have provided this two page PDF for lessons. You can print and distribute this learning tool to your students and test their eye knowledge.

Any questions?

If you need help with this document or the interactive eye resource, we are happy to help you. Send an email to info@visiondirect.co.uk and we will get back to you shortly. Any feedback is appreciated.

Please let us know what you think and your experience using it in the classroom.

Anatomy of the eye



Provide the name of the different parts of the eye

1

2

3

4

5

6

7

8

9

10

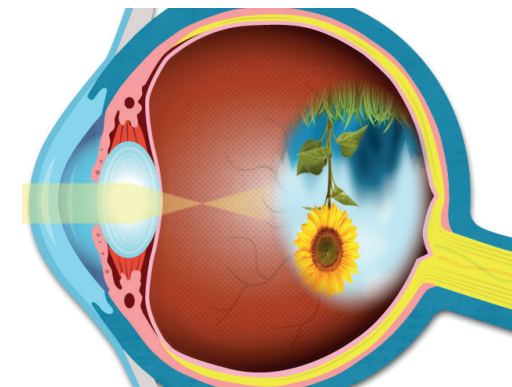
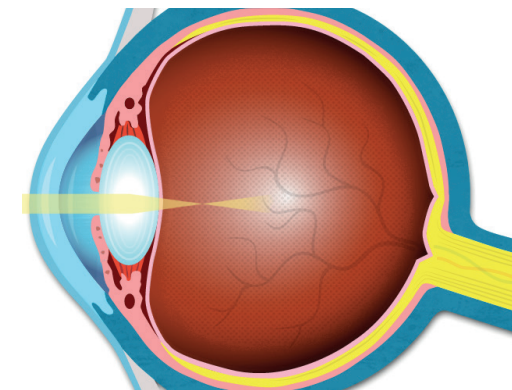
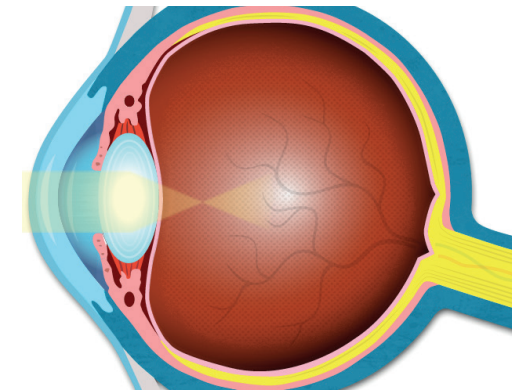
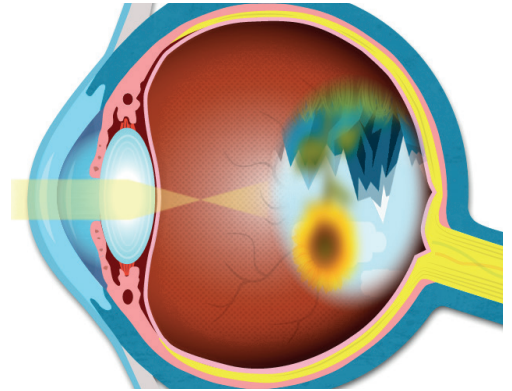
11

12

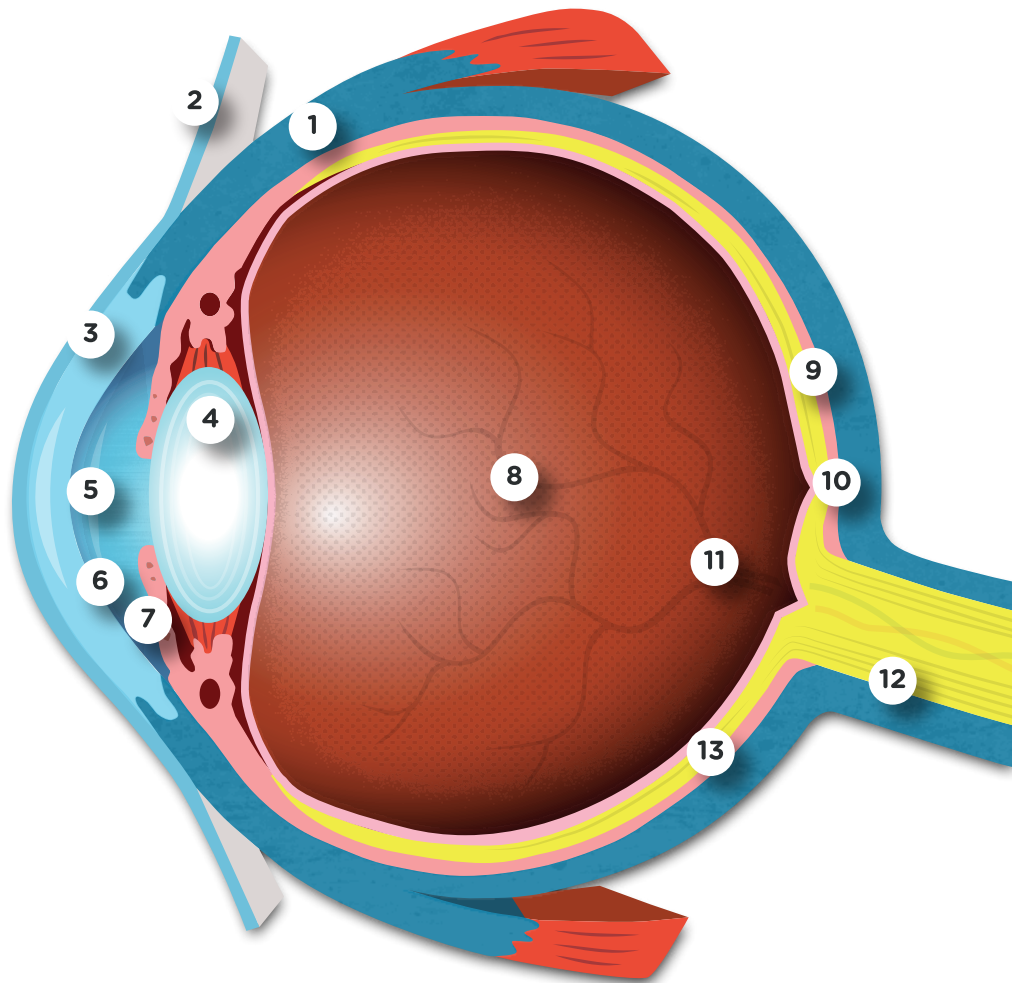
13

Different states of the eye

Connect the scene with the correct eye state



Anatomy of the eye



Provide the name of the different parts of the eye

1 Sclera

2 Conjunctiva

3 Cornea

4 Crystalline Lens

5 Pupil

6 Aqueous Humour

7 Iris

8 Vitreous Humour

9 Macula

10 Fovea

11 Optic Disc (Blind Spot)

12 Optic Nerve

13 Retina

Different states of the eye

Connect the scene with the correct eye state

