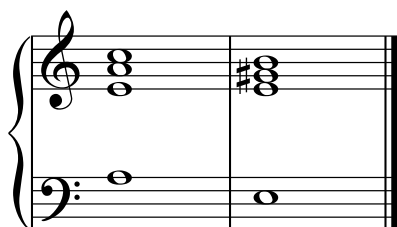


Cadences 1

Look at each cadence and play it on the computer or a keyboard . Write the Roman numerals to indicate the chords in it. Determine whether it is perfect (authentic), plagal (Amen), imperfect (half cadence), or interrupted (deceptive).

Imperfect (minor)



I V

Perfect



V I

Plagal



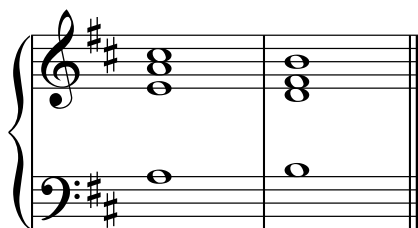
IV I

Imperfect (major)



I V

Interrupted



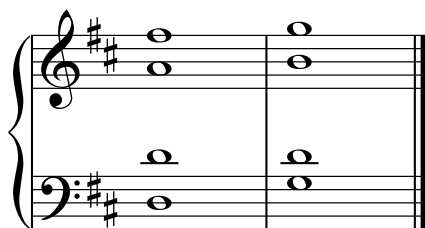
V vi

Perfect



V I

Perfect



V I

Perfect



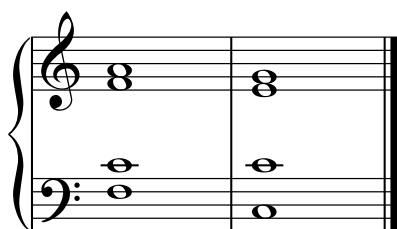
V I

Perfect (minor)



V I

Plagal



iv I

Imperfect



IV V

Imperfect (minor)



ii V